

Matthew Cassar

Performance Design

Graduate Portfolio - BOVTS 2022

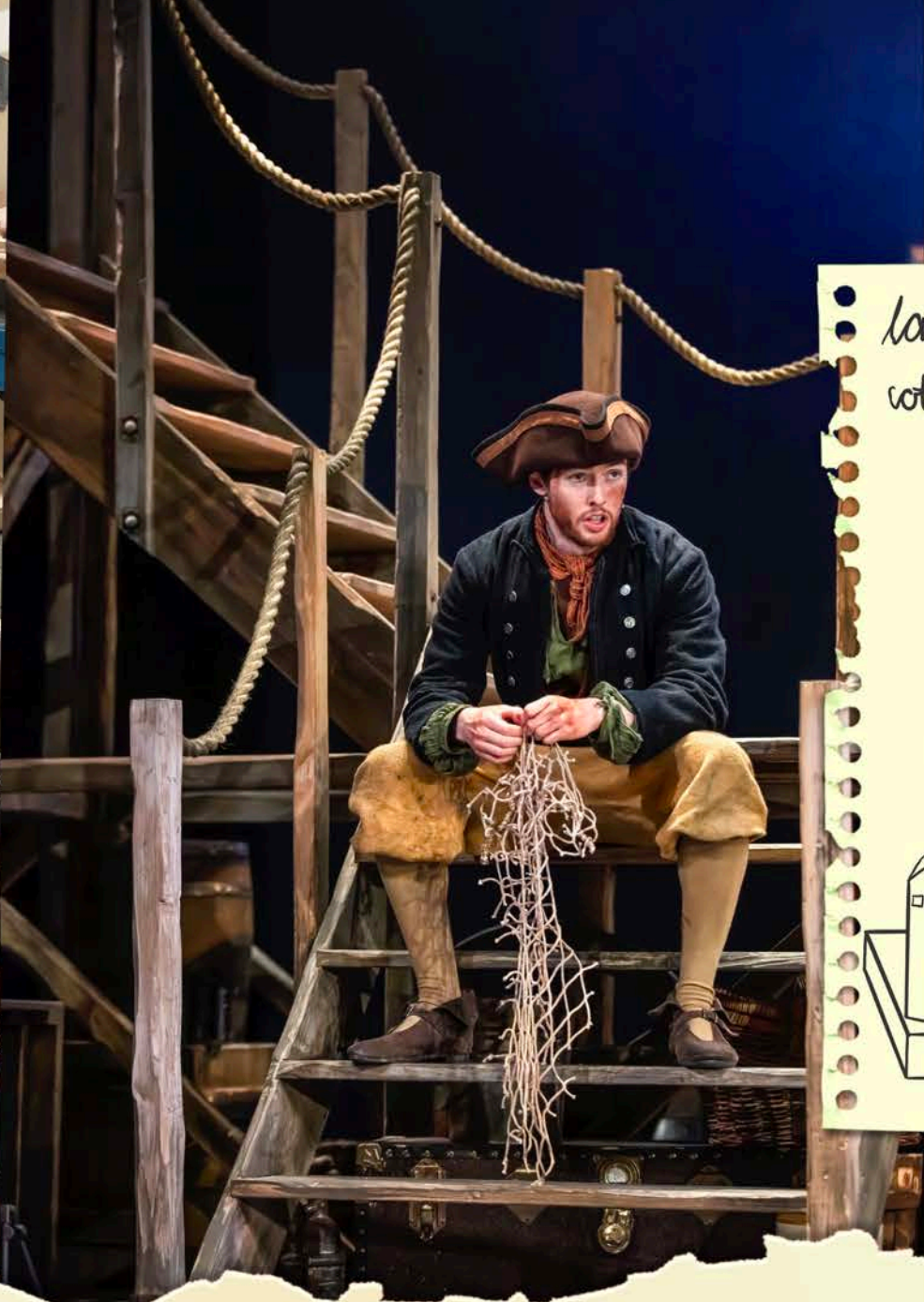
matthewcassar.co.uk
[@mcassardesign](https://www.instagram.com/mcassardesign)



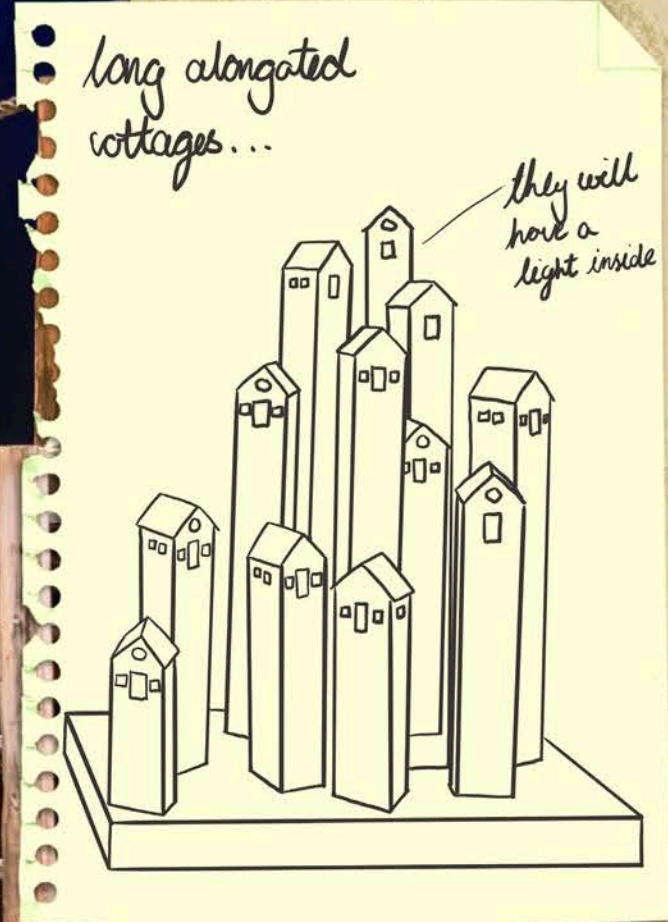


Catastrophe Bay

Set & Costume Design
Bristol Old Vic Main Stage
Director: Derek Bond



The world of Newtruch is that of a shipwreck!
All of the things which are found on stage are what
the villagers repurposed to create new things.



ropes, crates, barrels, fishing nets...
a typical Cornish town!



The main set pieces
are three different
set of threads made
from reclaimed wood.
These are put in different
configurations to show
different locations.



1:25 Scale Model





The boat could be stood upright and it became the entrance to the pub; 'The Last Laugh'

"The Last Laugh"

Act 1, Scene 4

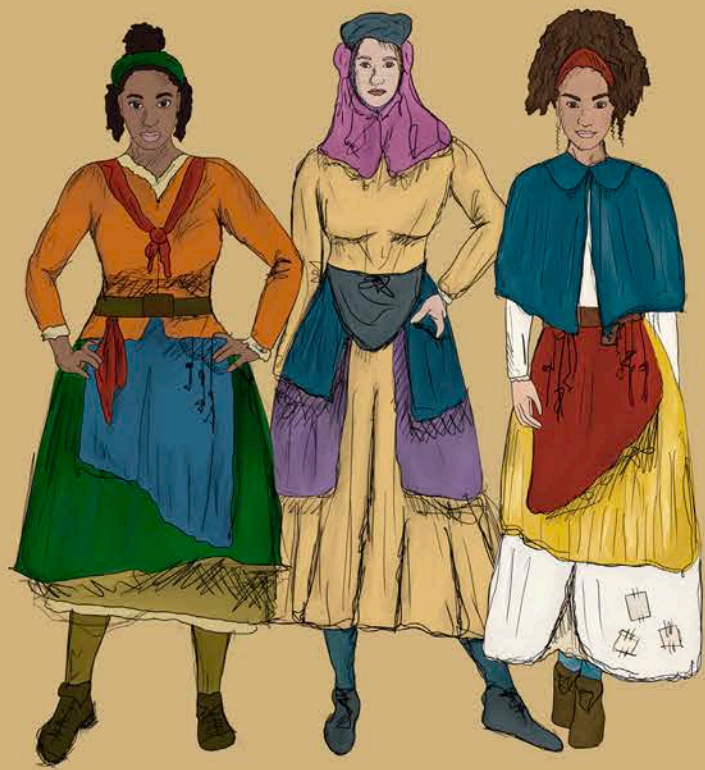


The Neutrock
"Furry"

Act 1, Scene 9



Coloured lanterns and bunting helped to create the festival setting.



Town Villagers Female



Town Villagers Male



Town Children



The Moxys



The Wrecking Crew



The Londoners





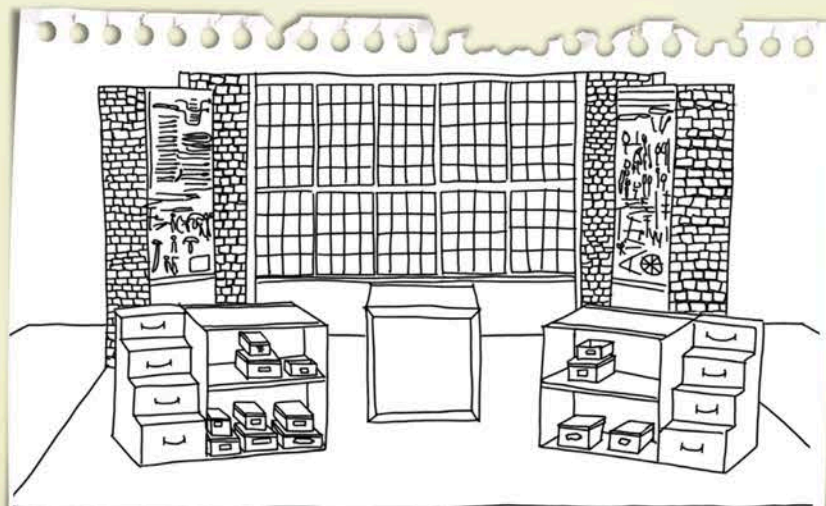
The Red Shoes & Other Stories

Set & Costume Design
Theatre in Education
Director: Toby Hulse

can be used to keep any small personal props



A group of cobblers



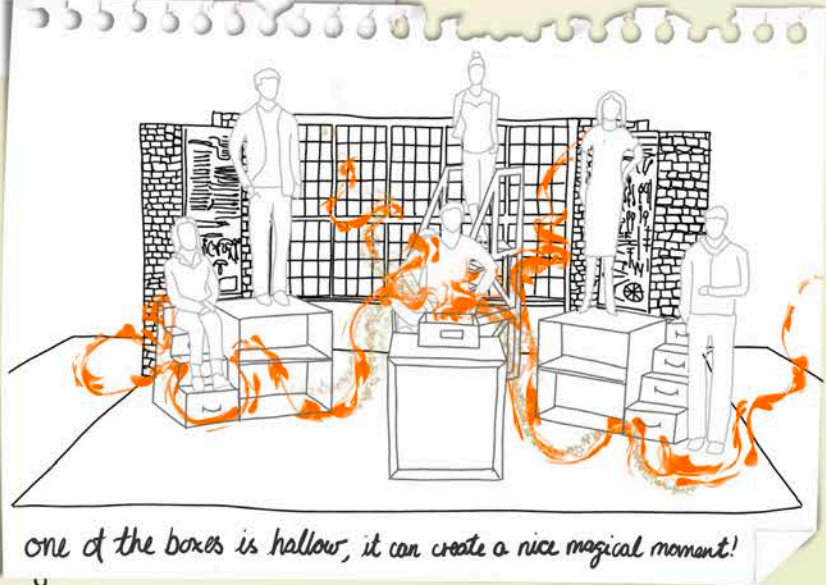
All of the props have to be items which are found in a shoe factory!



movable boxes and steps...



the ladder which has multiple different uses



one of the boxes is hollow, it can create a nice magical moment!

The backdrop helps to frame the action.







A Doll's House

Set & Costume Design
Bristol Old Vic, Mainstage
Director: Sofia Gallucci

The servant's chorus watches from the gallery...

Chandelier is flown in



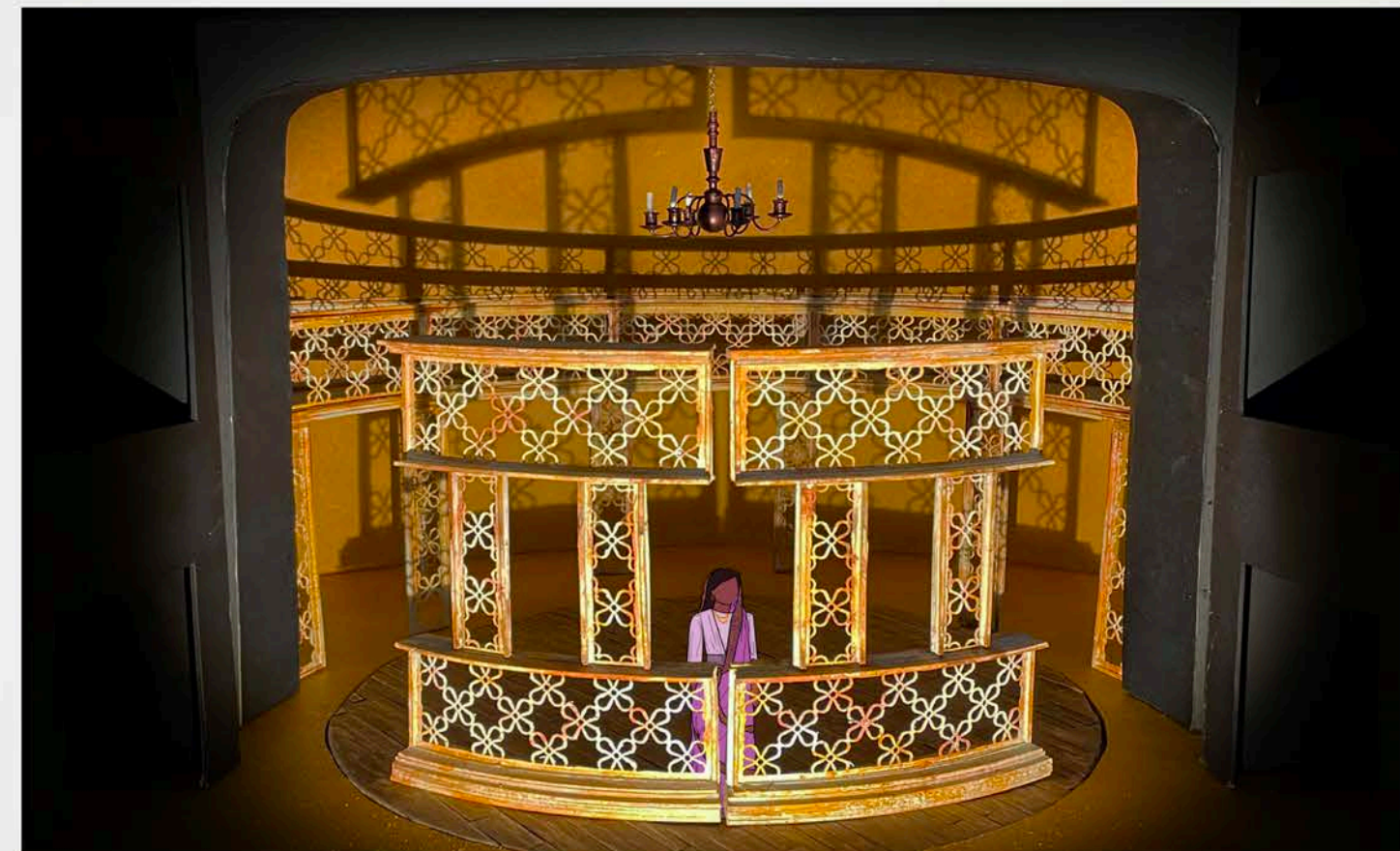
Niru Tom Helmer Mrs. Lahiri Das

Small pieces of furniture are added to each scene to go through different locations



Uma

Servants Chorus



The story is told by a small chorus of actor musicians who narrate and underscore the whole piece.

We wanted to play around with the metaphor of the caged bird, which influenced some of the design choices...



Jekyll & Hyde

Set and Costume Design
Regent's Park Open Air Theatre
Director: Jack Furnes

Initial Sketch Model Ideas:



* playing around the idea of an old film set and distorted architecture.



One of the main themes is that everyone is hiding behind a 'facade'.

In the end of Act I, all of the 'facades' drop to reveal the metal structures underneath.

*There's a face that we wear
In the cold light of day -
It's society's mask,
It's society's way,
And the truth is
That it's all a facade!*

Act I



Coloured costumes

Act II



Black & White costumes

The costumes between Act I and Act II will change to a black and white colour scheme with small pops of colour.



Act 1 - Scene 4 *The Red Rat Pub*



Act 1 - Scene 9 *London Street*



Act 1 - Scene 5 *Jekyll's Laboratory*

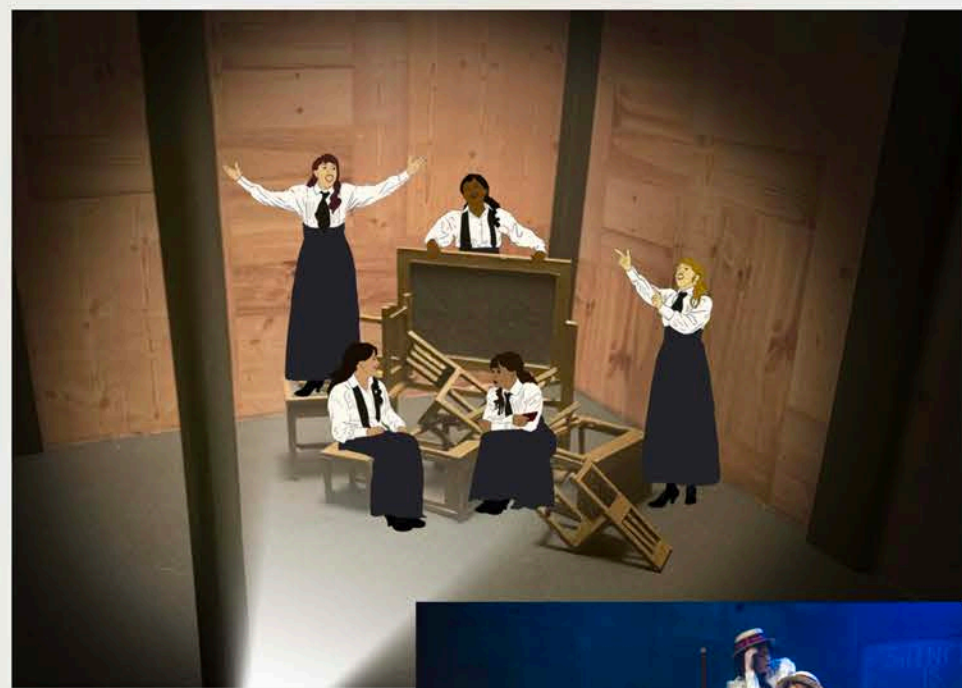


Act 2 - Scene 7 *An Ancient Church*



Picnic at Hanging Rock

Set & Costume Design
The Wardrobe Theatre
Director: Lowri Mathias



The chairs and desks can be used in different ways to represent different locations.

The school desks and chairs are used to create the rock.



LED was fixed to the inside of the desks

The three desks are used to illuminate the girls during the "nightmare sequence"



the tie can be removed



the use of chalk was used to change locations as well as to represent the sand texture which was found on the rock.

Victorian Girls Uniform





NIGHTMARES
BELONG
IN THE
PAST