



**LIZZIE MARIA
COSTUMES**

DESIGN PROJECTS

Akhnaten By Phillip Glass (MA Project)
COSTUME DESIGN
Set Designer: Choy Ping Clarke
Director: Adele Thomas

Lizzie Maria

A
K
H
N
A
T
E
N



Lizzie Maria

A
K
H
N
A
T
E
N



AYE



Akhnaten By Phillip Glass (MA Project)
COSTUME DESIGN
Set Designer: Choy Ping Clarke
Director: Adele Thomas

Lizzie Maria



A
K
H
N
A
T
E
N

NERFERTITI

A1:S1

Lizzie Maria



A
K
H
N
A
T
E
N

THE SCRIBE

Akhnaten By Phillip Glass (MA Project)
COSTUME DESIGN
Set Designer: Choy Ping Clarke
Director: Adele Thomas

Lizzie Maria

AKHNATEN



THE CHORUS OF ARMANA

MERRY WIVES OF WINDSOR BY OVO THEATRE
COSTUME DESIGN
Set Designer: SIMON NICHOLAS
Director: ADAM NICHOLS
VENUE: ROMAN THEATRE UK

THE MERRY WIVES OF WINDSOR



ANNE PAGE

Lizzie Maria Thomson

THE MERRY WIVES OF WINDSOR



**FALSTAFF AS
'THE FAT WOMAN OF HEMEL'**

lizzie M T





HENRY V BY OVO THEATRE
COSTUME DESIGN
Set Designer: SIMON NICHOLAS
Director: MATTHEW PARKER
VENUE: ROMAN THEATRE UK



HENRY V BY OVO THEATRE
COSTUME DESIGN
Set Designer: SIMON NICHOLAS
Director: MATTHEW PARKER
VENUE: ROMAN THEATRE UK

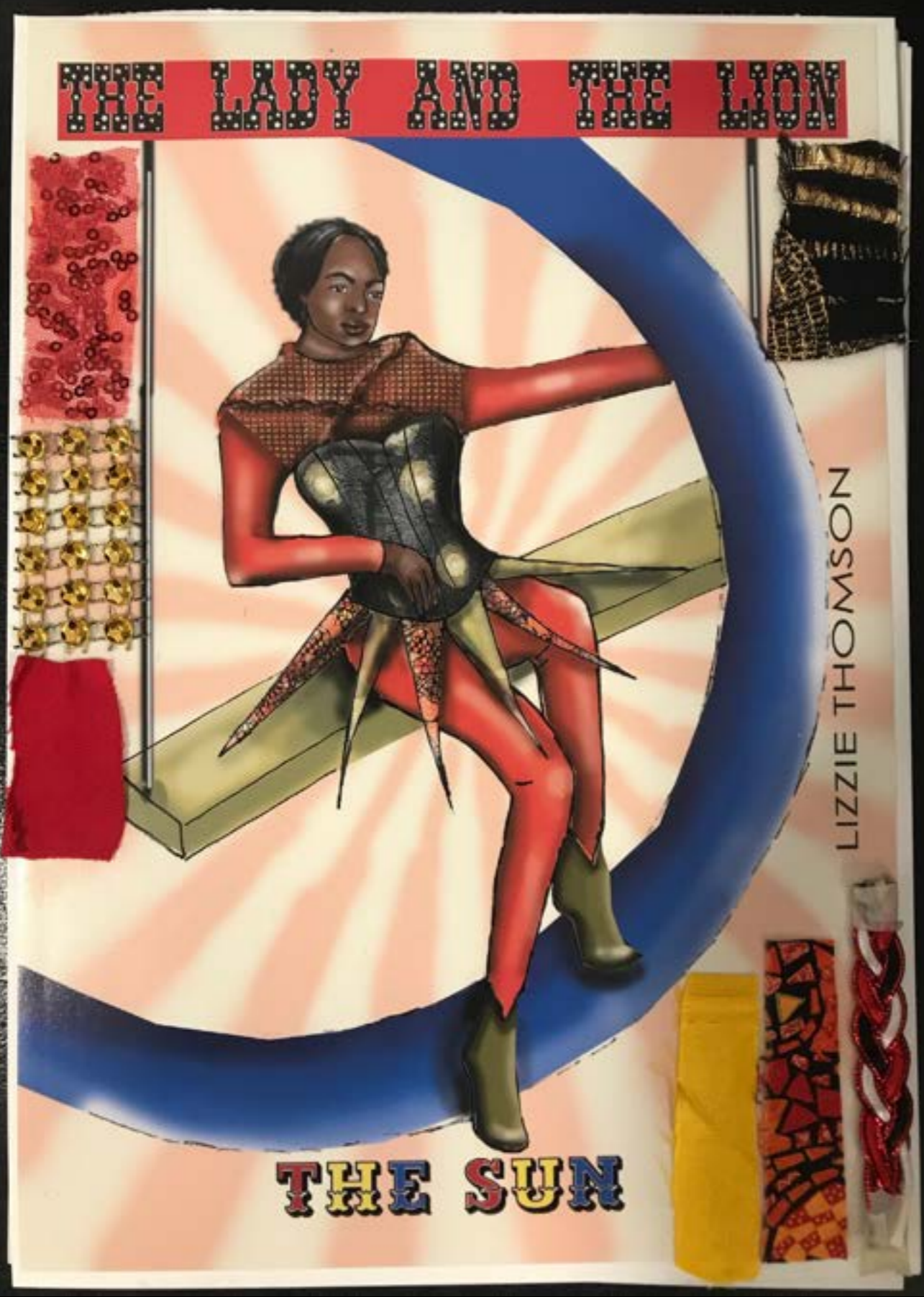


**HENRY V BY OVO THEATRE
COSTUME DESIGN
Set Designer: SIMON NICHOLAS
Director: MATTHEW PARKER
VENUE: ROMAN THEATRE UK**



FERAL BY SISATA
COSTUME DESIGN
CO Designer: SANDRA PHILLIPS
Director: CHARMAINE PARKIN
VENUE: LIGHTHOUSE POOLE/ TOUR







MACBETH BY OVO
COSTUME DESIGN
SET DESIGN: SIMON NICHOLAS
Director: ADAM NICHOLS AND JANET PODD
VENUE: ROMAN THEATRE/ MALTINGS THEATRE
PHOTOD: PAVEL GONEVSKI



COSTUME MAKES

PROSPERO
THE TEMPEST
MAKER
DESIGNED BY PING CLARKE-NG
PHOTOD: PING CLARKE-NG



PROSPERO
THE TEMPEST
MAKER
DESIGNED BY PING CLARKE-NG
PHOTOD: PING CLARKE-NG



PROSPERO
THE TEMPEST
MAKER
DESIGNED BY PING CLARKE-NG
PHOTO: PING CLARKE-NG



**PROSPERO
THE TEMPEST
MAKER
DESIGNED BY PING CLARKE-NG
PHOTOD: PING CLARKE-NG**



ABSOLUTE SCENES
MAKER
DESIGNED BY TASH SADIER
VENUE: THE MARBLE FACTORY
PHOTOD: MARK DAWSON



**ABSOLUTE SCENES
MAKER
DESIGNED BY TASH SADIER
VENUE: THE MARBLE FACTORY
PHOTOD: MARK DAWSON**



PETER PAN DESIGNED AND MADE BY
LIZZIE MARIA
VENUE: THE ROMAN THEATRE
PHOTOD: PAVEL GONEVSKI



PETER PAN DESIGNED AND MADE BY
LIZZIE MARIA
VENUE: THE ROMAN THEATRE
PHOTOD: PAVEL GONEVSKI



**18TH CENTURY UNDERGARMENTS MAKE:
STAYS, CHEMISE, PETTICOAT AND
PANNIERS**



ROMEO AND JULIET BY MOVING STORIES
COSTUME MAKER
DESIGNER: KATE UNWIN
DIRECTOR: EMMA GERSCH
VENUE: ROMAN THEATRE/ MINACK THEATRE
PHOTOS: HAYDN DAVIS





SUPERVISION AND DRESSING

The Grimm Sisters BY Scratchworks Theatre Company
COSTUME SUPERVISOR
DESIGNER: HELEN JOHNSON
VENUE: TOURING PIECE TBC



PETER PAN BY OVO THEATRE
COSTUME SUPERVISOR
DESIGNER: KATE UNWIN
DIRECTOR: ADAM NICHOLS
VENUE: THE ALBAN ARENA
PHOTOS: ELLIOT FRANKS



FAR FROM THE MADDING CROWD BY BRISTOL OLD VIC THEATRE SCHOOL

COSTUME SUPERVISOR

DESIGNER: MAX DOREY

DIRECTOR: PAUL CHESTERTON

VENUE: REDGRAVE THEATRE BRISTOL

PHOTOS: CRAIG FULLER



ROMEO AND JULIET BY MOVING STORIES
COSTUME SUPERVISOR
DESIGNER: KATE UNWIN
DIRECTOR: EMMA GERSCH
VENUE: ROMAN THEATRE/ MINACK THEATRE
PHOTOS: HAYDN DAVIS



TWELFTH NIGHT BY OVO THEATRE
COSTUME SUPERVISOR
DESIGNER: KATE UNWIN
VENUE: ROSE PLAYHOUSE LONDON
PHOTOS: LOUISE MORRIS

