



GINA HAMMERSLEY

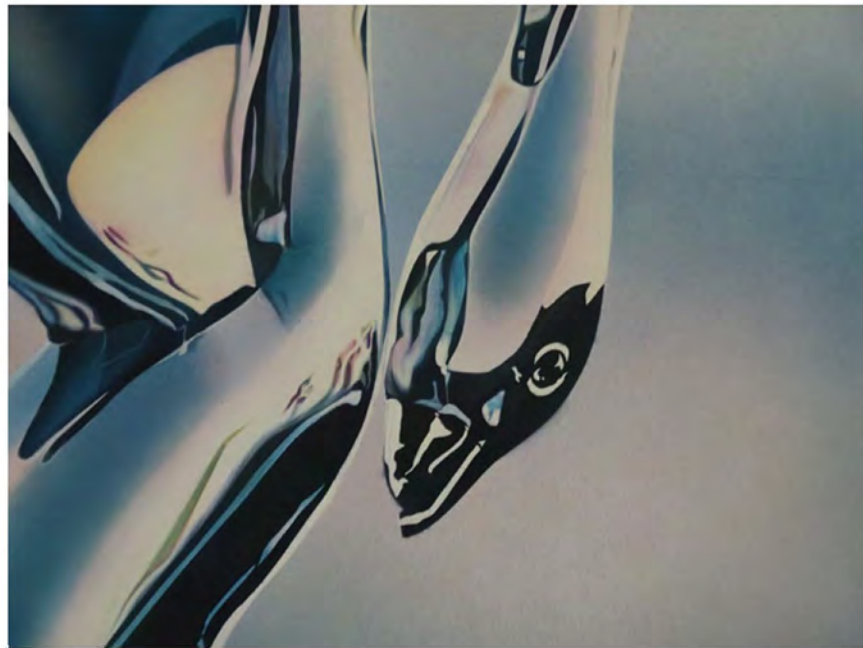
Scenic Art Portfolio

PROJECTS WITH BOVTS



SPRAY PROJECT

Cormorant Packard Hood Ornament, 269.5 x 180cm





OLD MASTERS PROJECT
Penitent Magdalene by Artemisia Gentileschi, 200 x 150.5cm



WOOD GRAINING



Walnut Burr Panel
60 x 40cm



Mahogany Egg & Dart Panel
60 x 40cm



TROMPE L'OEIL WOOD GRAINING PROJECT
Something Fishy, 80 x 60cm, Designed by Alexander McPherson



GRISILLE PAINTING



PERSPECTIVE



Perspective Study of 'Rome: The Interior of St Peters' by Giovanni Paolo Panini



A Study of a Capital in Pencil

RUST



CONCRETE





PERSONAL PROJECT

'Moritz' by Gerhard Richter, 240 x 175cm



PRODUCTIONS



Designers Model Box

TROILUS & CRESSIDA

DESIGNER: ELIZA PODESTA / **DIRECTOR:** Gemma Fairlie / **VENUE:** THE REDGRAVE THEATRE



Painted lino high school sports floor used as a battle ground



Polycarving and painting Roman brick walls

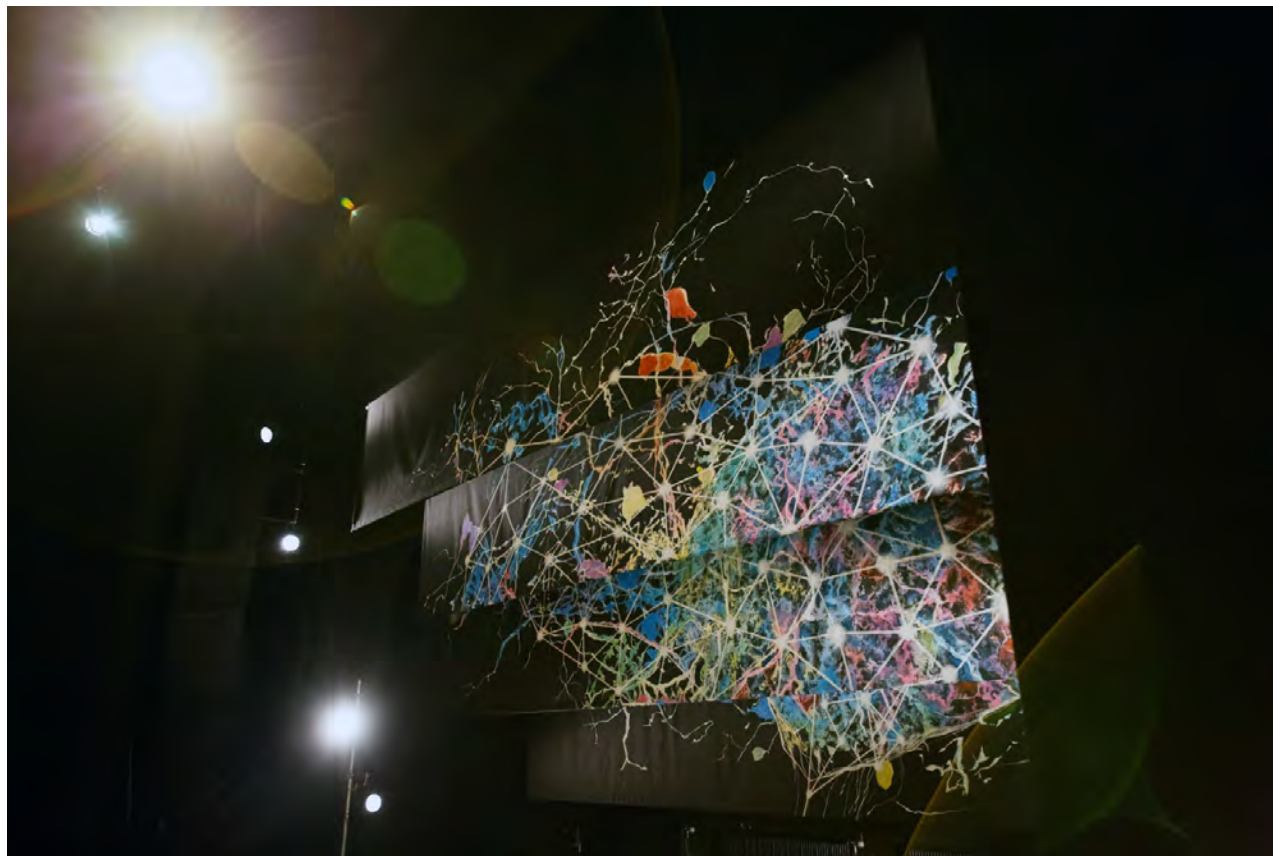




Large copper pipes painted using rollers and metallic powder paint. Vermiculite painted on using natural sponges and brushes

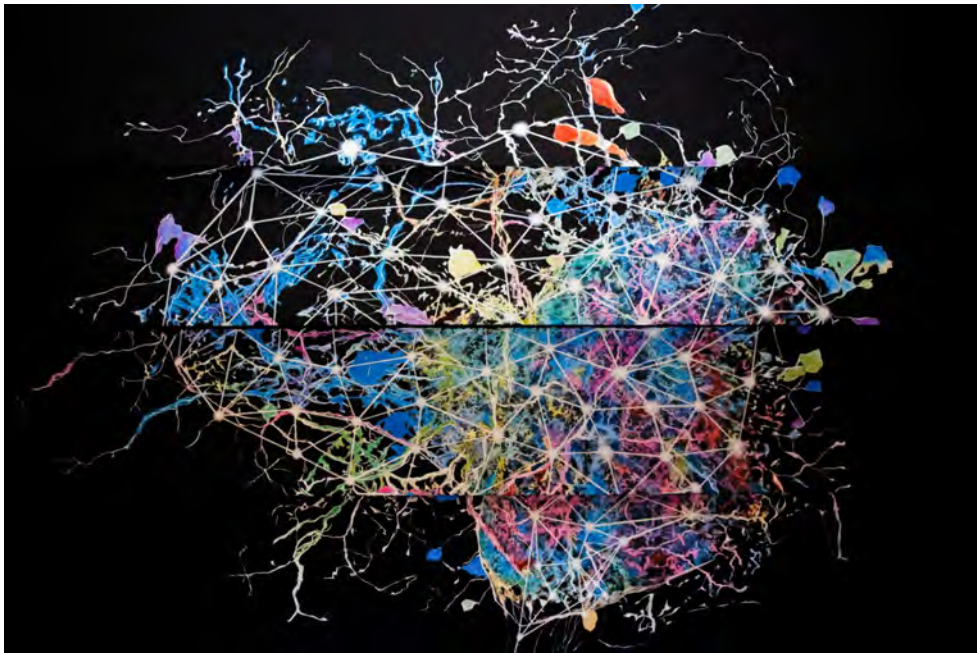


Breaking down school lockers, the Greek locker had more damage with graffiti sprayed on

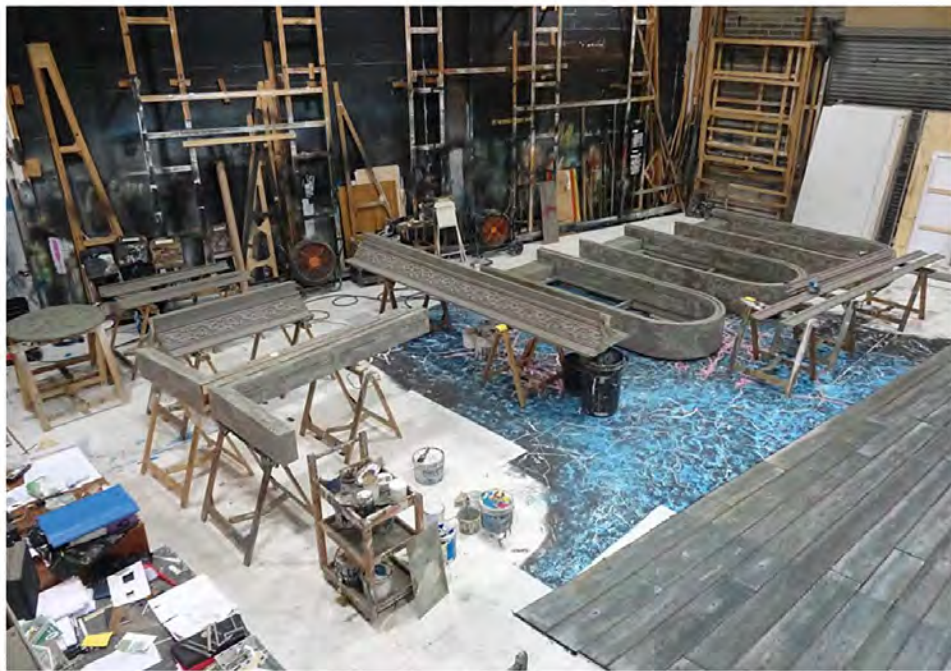


HEDDA

DESIGNER: Bronia Housman / **DIRECTOR:** Jenny Stephens / **VENUE:** Bristol Old Vic Theatre, Main Stage



Painting the exploding brain design for Hedda on 4 separate cloths using a range of tools and fluorescent powder paint



Textured window frames using blocking and rolling, also painting the vacform moldings



Painting a weathered and rotten wooden hut frame using idenden, artex and pva



Muddy and cracked floor created using textured rollers, mops and a spray gun



A reproduction of 'The Fall of Babylon' tapestry, painted onto canvas for absolute scenes

ABSOLUTE SCENES

DESIGNER: Bronia Housman / **DIRECTOR:** Tanuja Amarasuriya / **VENUE:** Marble Factory





Tapestry surface suggested through rolling a textured roller in directional lines and extending the painting to create a woven effect

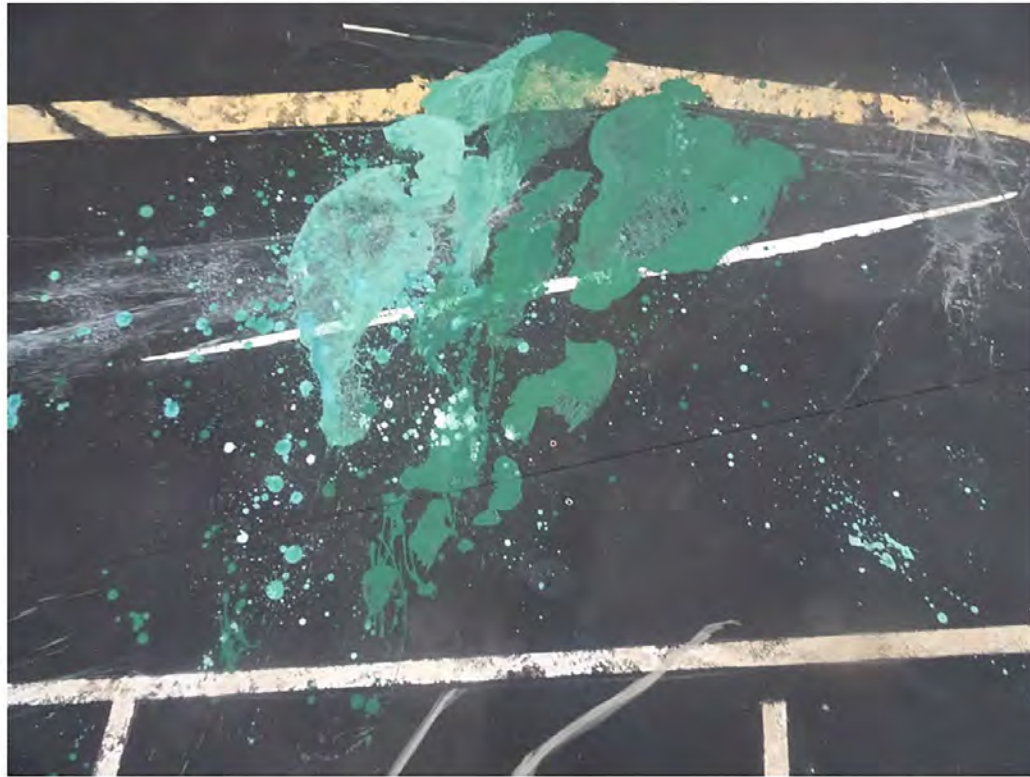


Designers model of the floor and set pieces



THE THREE SEAGULLS

DESIGNER: Cat Fuller / **DIRECTOR:** Sally Cookson / **VENUE:** Bristol Old Vic Theatre



FINE ART



A Transcription Painting of 'An Experiment on a Bird in the Air Pump' by Joesph Wright of Derby
Oil on Canvas, 2020 (started in 2018)



THIS LITTLE PIGGY WENT TO
MARKET,
2020, Oil on Canvas, 170 x 120cm



THIS LITTLE PIGGY STAYED AT
HOME,
2020, Oil on Canvas, 170 x 120cm



THIS LITTLE PIGGY ATE ROAST
BEEF,
2020, Oil on Canvas, 170 x 120cm



The Shambles, 2020,
Oil on Canvas, 123 x 96cm



An Invisible Friend, 2020, Pencil Study,
61 x 37.5cm



Solar Eclipse in Paris, 2019, Oil on
Canvas, 20.3 x 25.3cm



A Case of Domestic Violence, Oil on Canvas,
102 x 128cm



Smile for the Camera, 2020,
Oil on Canvas, 92 x 80cm



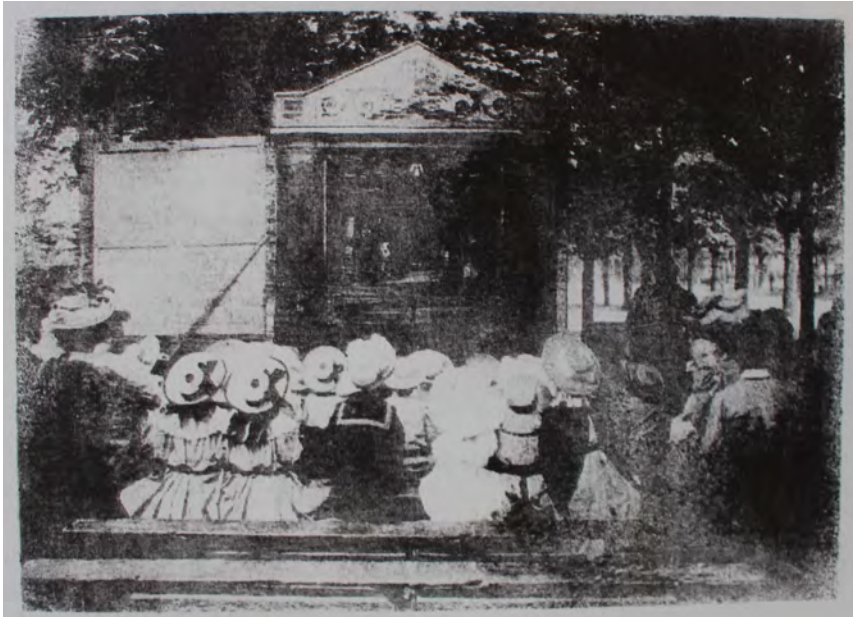
Boys of the Slaughter Ranch,
Oil on Canvas, 2019, 60 x 48.5cm.



Place Your Bets, Oil on Canvas, 2019,
70 x 100cm



A Convicts' Home, Oil on Canvas, 2019,
50.4 x 80.5cm



Lithograph Prints, 2019

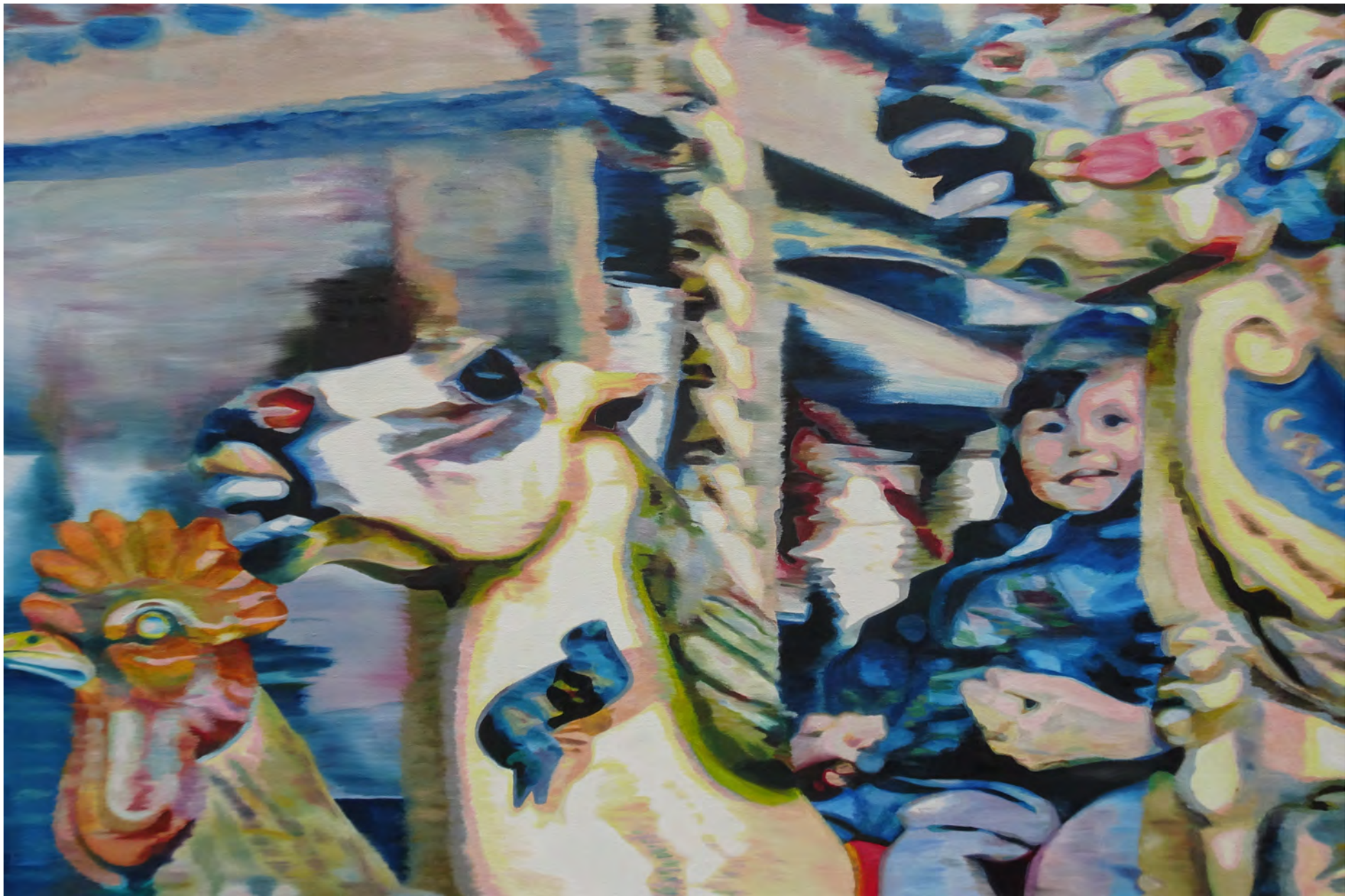


The Lost Boys, 2019, Charcoal Study on Paper, 100 x 75cm



Ink pen studies of original Alice in Wonderland Illustrations





Carousel
2018, Oil on Canvas, 80 x 120cm