

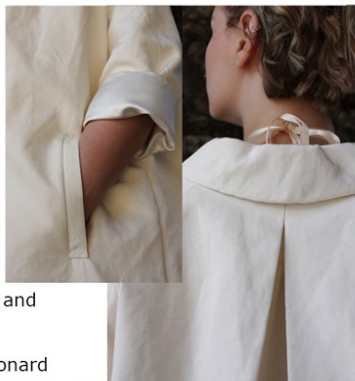
**3rd Year - Couture Clothing After the War  
- Day Wear**

Duchess satin and beaded lace dress, paired with silk  
overcoat and matching underpinnings.  
(Petticoat and Corset)  
Photographs taken by Carys Leonard



**3rd Year - Couture Clothing  
After the War - Day Wear**

Duchess satin and beaded lace  
dress, paired with silk overcoat and  
matching underpinnings.  
(Petticoat and Corset)  
Photographs taken by Carys Leonard



*Amber L. Bowerman*  
COSTUME



**3rd Year - Couture Clothing After the War  
- Work Wear**  
Black and grey, 3 piece suit with a velvet collar and buttons paired with a pill box felt hat





**3rd Year - Couture Clothing After the War  
- Work Wear**

Black and grey, 3 piece suit with a velvet collar and buttons paired with a pill box felt hat





**3rd Year - Couture Clothing After the War - Evening Wear**  
I have created a structured gown with a pleated train and a decorative bow. I have also made an under corset and net petticoat to achieved the desired shape of the era.

**3rd Year - Couture Clothing After the War - Evening Wear**

I have created a structured gown with a pleated train and a decorative bow. I have also made an under corset and net petticoat to achieved the desired shape of the era.



*Amber L. Bowerman*

COSTUME

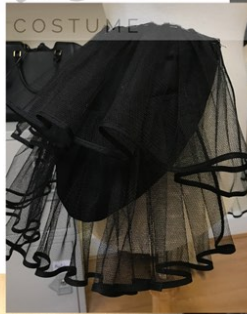


### Tailoring Project

Inspired by the 1947 'Dior, Bar Suit' I have created a full pleated skirt fitted with hip padding and petticoat. I have also created a tight fitting tailored jacket with hip padding, welt pockets and a notched collar.



*Amber L. Bowerman*



### Tailoring Project - Progress Photos

Inspired by the 1947 'Dior, Bar Suit' I have created a full pleated skirt fitted with hip padding and petticoat. I have also created a tight fitting tailored jacket with hip padding, welt pockets and a notched collar.





**Liddy - Victorian Gown**  
Directed by Paul Chesterton  
Designed by Max Dorey  
Costume Maker  
FAR FROM THE MADDING CROWD



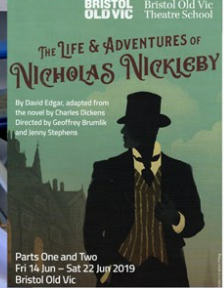






*Amber L. Bowerman*  
COSTUME

**Miss La Creevy - Double Wrap Overskirt**  
Directed by Geoffrey Brumlick and Jenny Stephens  
Designed By Alana Ashley  
Costume Maker  
**THE LIFE AND ADVENTURE OF  
NICHOLAS NICKLEBY PART 1&2**





## Kate Nickleby - Lace Caplet

Directed By Geoffrey Brumlick and Jenny Stephens

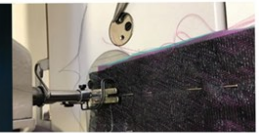
Designed By Alana Ashley

Costume Maker (Under Dress Made By Becky Davies)

THE LIFE AND ADVENTURES OF NICHOLAS  
NICKLEBY PART 1



**Pigeons**  
Directed by Paul Clarkson  
Designed by Bronia Houseman  
Costume Maker  
**THE SNOW QUEEN**







**Jasmine - Burlesque Scene**  
Directed By Cressida Brown  
Designed by Angela Davies  
Costume Maker and Supervisor  
EARTHQUAKES IN LONDON







**The Queen's Cloak**  
Directed by Claire O'Reilly  
Designed by Roisin Martindale  
Costume Maker and Break-Down Artist  
WE WANT YOU TO WATCH



During 'WE WANT YOU TO WATCH' the Queen is held captive in a bin. Working on-top of a pre-existing cloak, I have created a piece of work that has been broken-down with multiple items also worked into.

*Amber L. Bowerman*  
COSTUME

**We Want You To Watch**  
Directed by Claire O'Reilly  
Designed By Roisin Martindale  
Costume Supervisor and Maker









**The Life and Adventure of Nicholas Nickleby Part 1&2**  
Directed by Geoffrey Brumlick and Jenny Stephens  
Designed By Alana Ashley and Oscar Selfridge  
Costume Dresser and Assistant



*Amber L. Bowerman*  
COSTUME

**Menswear - Tailored 1940's inspired Waistcoat**

Double breasted waistcoat, with three welt pockets and silk lining.





**Corset Construction**  
1950's 'Merry Widow' Inspired Corset/Girdle





**Stretchwear**  
Pink and Cream Leotard With Matching Overskirt





**Foundation Wear**

Gathered bloomers with fitted front yoke and decorative lace.  
Cotton Chemise with lace inserts.  
Pleated fitted petticoat.



### Body Padding and Stretchwear

Padded pregnancy bump, constructed onto a leotard. The pregnancy bump has been used in stage and screen productions including 'EARTHQUAKES IN LONDON' (left) and 'TOMORROW'(right).





## Elizabethan Ruff

This ruff was constructed with a light-weight linen and decorative lace, which formed 80 folds. This ruff later went into the production of 'A RUFF GUIDE TO SHAKESPEARE'. Designed By Emily Leonard Directed by Hal Chambers



**Ladies Victorian Bonnet**

Buckram base, wired brim with decorative lace and a pleated silk lining.



*Amber V. Bowerman*  
COSTUME



### Peddle Straw Hat

Hand sewn peddle straw hat, with a wired brim and sinamay undercap. This piece was inspired by the 1947 'Dior, Bar Suit' which was paired with a flared straw hat. Originally sewn with a wider peddle straw braid, i chose to use a 7mm wide braid, for a thinner finish.



*Amber L. Bowerman*  
COSTUME

Amber L. Bowerman  
COSTUME



**Millinery**  
Various millinery projects, using a range of different materials.





“Unchained”  
Bath College 2nd Year FMP  
Suffragette Inspired Overcoats



**Work Experience**  
Experience whilst working for Ani Stafford-Townsend at Milliners Guild



**PRISCILLA**  
QUEEN OF THE DESERT  
THE MUSICAL



*Amber L. Bowerman*  
COSTUME



© Amber L. Bowerman, 2021

30